

Excellent performance 1500kw -2000kw generators for sale open diesel generator sets power by Weichai Generator 12M55D2210E310

Specifications :

Price	Contact us
Brand Name	Huali
Place of Origin	China
Min.Order Quantity	1
Payment Terms	OEM?ODM?OBM
Supply Ability	1000
Delivery Detail	3-7days

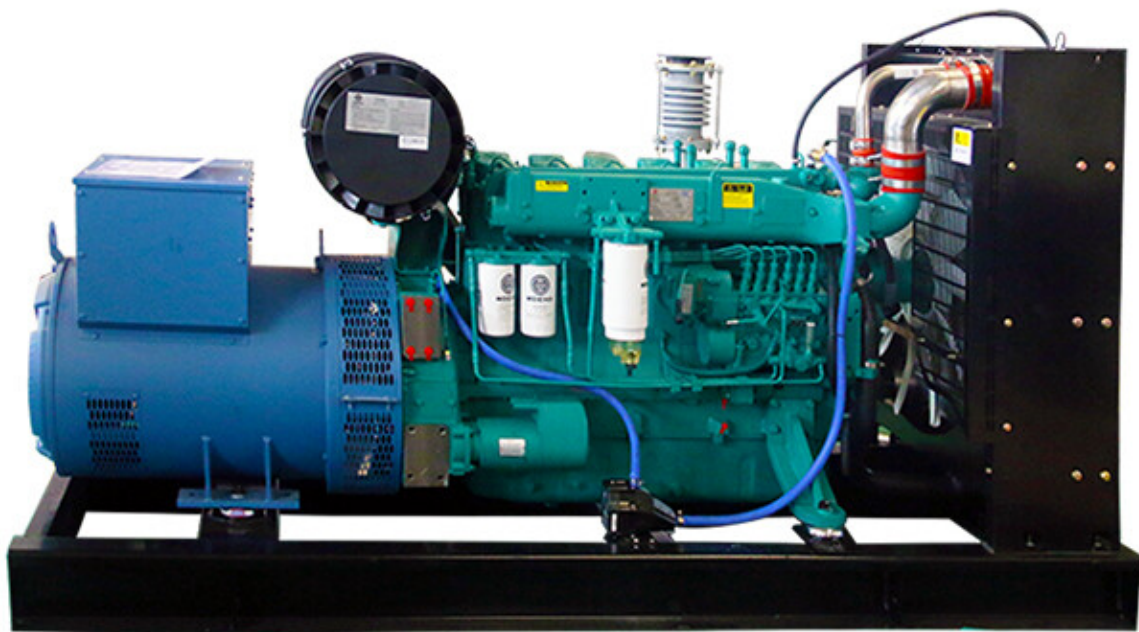
Detail Introduction :

What is Weichai Generator used for?

Weichai Generators serve a vital role across various sectors by providing a reliable and continuous power supply, essential for operations where grid power is unavailable, unreliable, or too costly. These versatile units are indispensable in construction sites, manufacturing plants, and agricultural operations, supporting machinery, lighting, and essential systems. In the healthcare sector, they ensure uninterrupted power for critical medical equipment, while in the telecommunications industry, they keep networks running during outages. Weichai's range of generators is also crucial for emergency preparedness, offering backup power to facilities during natural disasters or power grid failures. Furthermore, their portability and robust construction make them ideal for remote and challenging environments, ensuring that regardless of the location, businesses and essential services can maintain operational continuity and resilience.

How to use Weichai Generator?

To effectively utilize a Weichai Generator, start by carefully selecting a model that matches your power requirements, ensuring it has the capacity to handle your specific load needs. Prior to operation, position the generator in a well-ventilated area to avoid carbon monoxide accumulation and ensure it is placed on a stable, level surface to prevent operational disturbances. Connect your load using the appropriate cables, and check that the generator's fuel tank is filled with the correct type of fuel. Before starting, perform a pre-operation check by inspecting oil and coolant levels to prevent engine damage. To start the generator, follow the manufacturer's instructions, typically involving turning the key or pressing the start button. Once running, monitor the generator's performance using the built-in control panel, adjusting loads as necessary to avoid overloading. Regular maintenance, as specified by Weichai's guidelines, is crucial to ensure the generator's longevity and reliability, including timely oil changes, filter replacements, and routine inspections. By adhering to these practices, you can maximize the efficiency and lifespan of your Weichai Generator, ensuring a reliable power supply for your needs.



Advantages of Weichai Generator related products?

Weichai Generators stand out in the market for their exceptional blend of durability, efficiency, and technological innovation. Constructed to deliver reliable performance under challenging conditions, these generators are equipped with engines that boast high fuel efficiency, reducing operational costs over time. A key advantage of Weichai Generators is their adaptability to various fuel types, including diesel, natural gas, and biofuel options, offering flexibility in operation and contributing to a lower environmental impact. Advanced control systems enable easy monitoring and precise management of power output, enhancing the overall efficiency and safety of the unit. Furthermore, Weichai's commitment to research and development ensures that their generators incorporate the latest in power generation technology, providing users with a product that is not only powerful but also user-friendly and easy to maintain. This makes Weichai Generators an ideal choice for industries seeking a reliable power solution that combines performance with sustainability.

How much HP does a Weichai engine have?	The Weichai brand product line has propulsion engines from 27 to 2,666 HP.
Does Liebherr make engines?	For decades Liebherr has been developing and manufacturing robust combustion engines for diverse applications.
Is Isuzu the best diesel engine?	One of the world's leading diesel engine and commercial vehicle manufacturers, Isuzu has produced over 26 million of the most advanced, reliable diesel engines in the world.

Maintenance of Weichai Generator related products?

Maintaining a Weichai Generator involves a regimen of regular checks and services to ensure its longevity and optimal performance. Begin with routine inspections of the oil level, air filter, and coolant system, replacing or refilling as necessary to prevent overheating and engine wear. It is crucial to use only genuine Weichai parts for replacements to guarantee compatibility and efficiency. Conducting a load test periodically helps in identifying any operational issues or need for adjustments to ensure the generator performs efficiently under the required load conditions. Keeping the exterior and control panel clean from debris and dust not only prolongs the life of the generator but also prevents potential operational hazards. Additionally, scheduling professional maintenance services annually allows for a comprehensive examination of electrical connections, fuel system, and overall engine health, ensuring any minor issues are addressed before they escalate into major problems. Adhering to these maintenance practices will maximize the reliability and efficiency of your Weichai Generator, ensuring a steady and dependable power supply when needed.